



Greenland

DUNE
UNIQUE MATTERS

Roca

Greenland

Inspired by the fascinating landscapes of Greenland, Greenland, the largest series in Shelter, offers a palette of six earth and water tones that capture the essence of these environments. With spectacular technical quality and colors, this series stands out for its material richness and versatility, transforming any space into a work of natural art.



Greenland Teal 2.5"x9"



Greenland Frost 2.5"x9" / Greenland Cobalt 6"x6"



Greenland Cobalt 6"x6"



Greenland Teal 6"x6"

Greenland

Color Body Porcelain

8-8.5 mm



6"x6"
14.7x14.7 cm

2.5"x9"
6.4x22.3 cm



Frost



6"x6" Matte Anti-Slip
189073



Teal



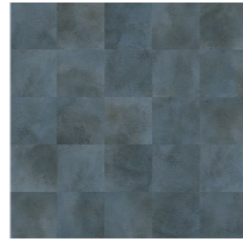
6"x6" Matte Anti-Slip
189077



Clay



6"x6" Matte Anti-Slip
189074



Cobalt



6"x6" Matte Anti-Slip
189078

Technical Specifications

CHARACTERISTICS	STANDARD	DECLARED ASTM
Water Absorption	ISO-10545-3	E<=0.5%
Resistance to Surface Abrasion	ISO-10545-7	Class 3
Chemical Resistance	ISO-10545-13	A
Flatness	ISO-10545-2	± 0.5%
Resistance to Stains	ISO-10545-14	4
Slip Resistance	41901 EX	Class 3
Breaking Strength	ISO-10545-4:9	>=350 lbf
Resistance to Thermal Shock	ISO-10545-9	Accomplish
Slip Resistance	DIN 51130	R12

Packaging Info

Size	SF per carton	PC per carton	BX per pallet
6"x6" Matte Antislip	46.28	44	70



Greenland Cobalt 6"x6"

Greenland

Color Body Porcelain

8-8.5 mm



6"x6"
14.7x14.7 cm

2.5"x9"
6.4x22.3 cm

Technical Specifications

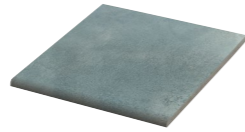
CHARACTERISTICS	STANDARD	DECLARED ASTM
Water Absorption	ISO-10545-3	E<=0.5%
Resistance to Surface Abrasion	ISO-10545-7	Class 3
Chemical Resistance	ISO-10545-13	A
Flatness	ISO-10545-2	± 0.5%
Resistance to Stains	ISO-10545-14	4
Slip Resistance	41901 EX	Class 3
Breaking Strength	ISO-10545-4:9	>=350 lbf
Resistance to Thermal Shock	ISO-10545-9	Accomplish
Slip Resistance	DIN 51130	R12

Frost



6"x6" Bullnose
Matte Anti-Slip
189073

Teal



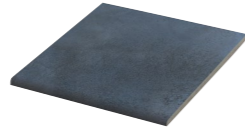
6"x6" Bullnose
Matte Anti-Slip
189083

Clay



6"x6" Bullnose
Matte Anti-Slip
189080

Cobalt



6"x6" Bullnose
Matte Anti-Slip
189084

Packaging Info

Size	SF per carton	PC per carton	BX per pallet
6"x6" Matte Antislip	46.28	44	70



Greenland Teal 6"x6"

Greenland

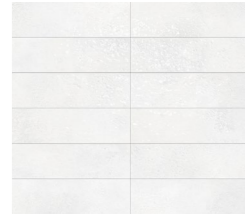
Color Body Porcelain

8-8.5 mm

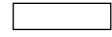


6"x6"
14.7x14.7 cm

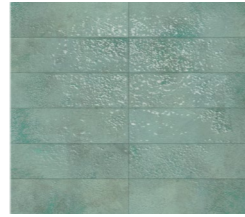
2.5"x9"
6.4x22.3 cm



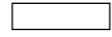
Frost



2.5"x9" Bright
189061



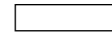
Teal



2.5"x9" Bright
189064



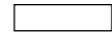
Clay



2.5"x9" Bright
189062



Cobalt



2.5"x9" Bright
189066

Technical Specifications

CHARACTERISTICS	STANDARD	DECLARED ASTM
Dimensions	ISO-10545-2	± 0.6%
Water Absorption	ISO-10545-3	E≤0.5%
Resistance to Surface Abrasion	ISO-10545-7	Class 3
Chemical Resistance	ISO-10545-13	A
Flatness	ISO-10545-2	± 0.5%
Resistance to Stains	ISO-10545-14	5
Slip Resistance	41901 EX	Class 1
Breaking Strength	ISO-10545-4:9	>=350 lbf
Resistance to Thermal Shock	ISO-10545-9	Accomplish
Slip Resistance	DIN 51130	R10

Packaging Info

Size	SF per carton	PC per carton	BX per pallet
2.5"x9" Bright	70.07	32	156



Greenland Clay Bright 2.5"x9"